



MONTHLY MEMBERSHIP PROGRESS REPORT

District 322 D

Results as of: 01/31/2018

GMT: SWADESH RANJAN SAHA

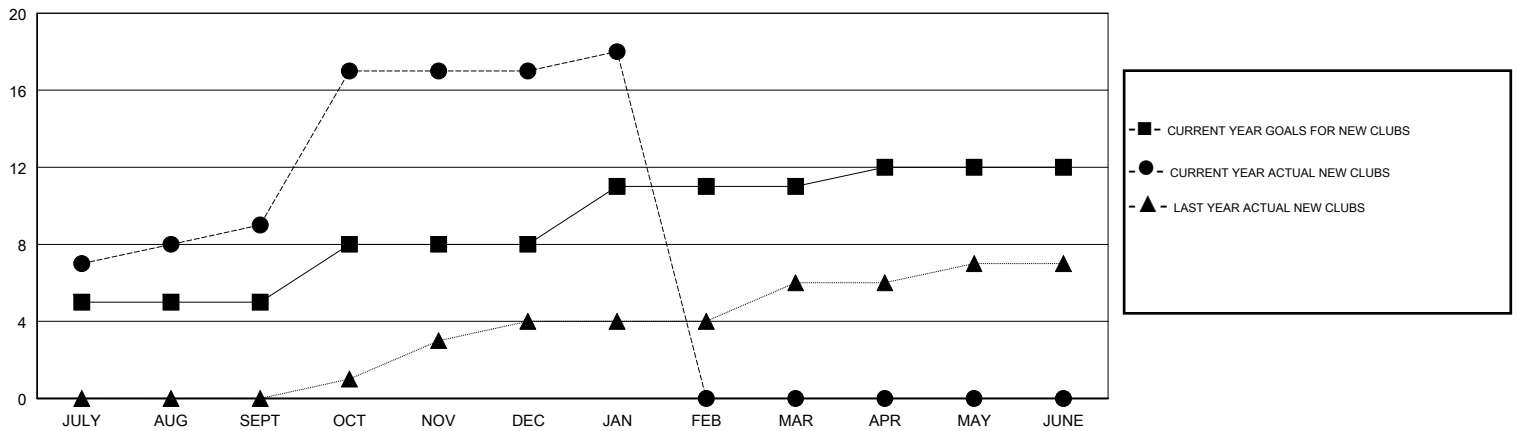
LOCATION INDIA

GMT CA

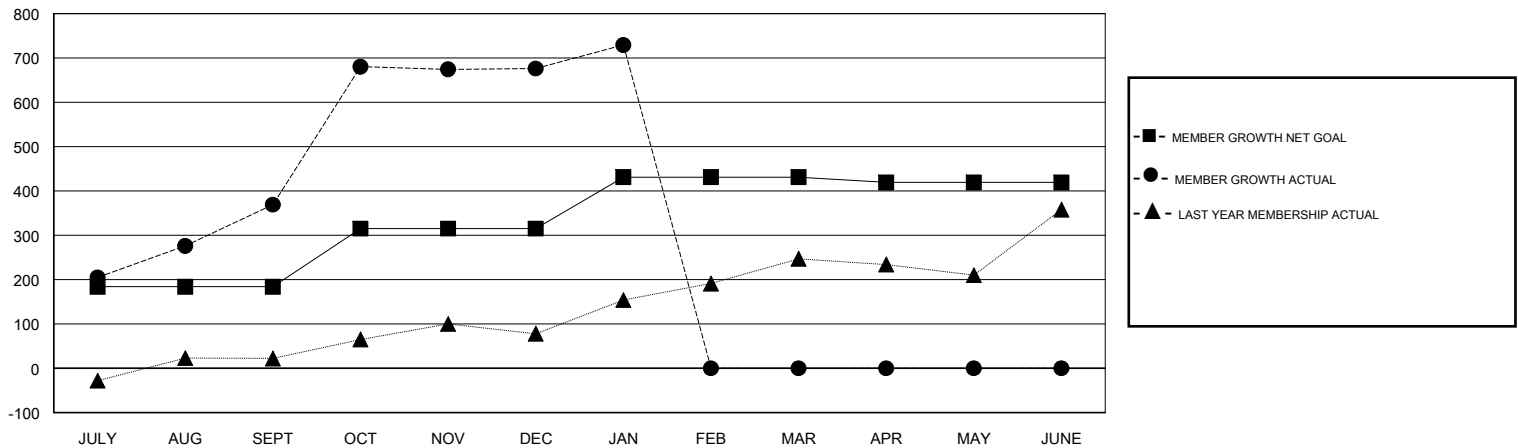
Clubs			
RESULTS FOR 2017-2018			
QUARTER	NEW CLUB GOAL	NEW CLUBS	DROPPED CLUBS
JULY/AUG/SEPT	5	9	0
OCT/NOV/DEC	3	8	0
JAN/FEB/MAR	3	1	0
APR/MAY/JUNE	1	0	0

Members			
RESULTS FOR 2017-2018			
QUARTER	MEMBER GROWTH NET GOAL	MEMBER GROWTH ACTUAL	DROPPED MEMBERS ACTUAL (including transfers)
JULY/AUG/SEPT	184	499	126
OCT/NOV/DEC	131	375	68
JAN/FEB/MAR	116	75	21
APR/MAY/JUNE	-12	0	0

GOALS AND ACTUAL NEW CLUBS CUMULATIVE



GOALS AND ACTUAL MEMBERS CUMULATIVE



DROPPED CLUBS: 0	89 CLUBS OF 121 ADDED 1 OR MORE NEW MEMBERS	<u>GENDER DISTRIBUTION</u>	
DROPPED MEMBERS		MALE	3,702 (70.47%)
DECEASED	12	FEMALE	1,551 (29.53%)
CLUB CANCELLED	0	Women Percentage Fiscal Year Goal: 26%	
OTHER	203	CLICK HERE FOR CUMULATIVE MEMBERSHIP DATA	
TOTAL	215	TOTAL FAMILY UNIT MEMBERS	1,858
		FAMILY MEMBERS PAYING HALF DUES	945